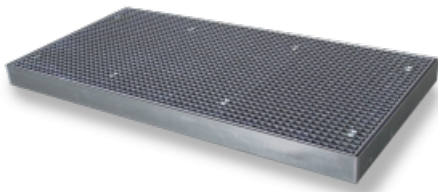


Created on: 03-07-2024 09:41:12 |
 Technical changes and imperfections reserved.

PRODUCT DATA SHEET Hiltru®: Coupling floor element model FW 7 ~ (2 m2)



Size Coupling floor element model FW 7 ~ (2 m2)

Article number	8314
Dimensions LxWxH external	2000 x 1000 x 118 mm
Collection capacity	168 liters
Weight	approx. 122 kg
Floor load	6500 kg/m ²
Field pressure load	600 kg (20x20 cm)
Material	made of galvanized steel 3 mm S235JR

Specifications Coupling floor element model FW 7 ~ (2 m2)

In many situations, the coupling floor system can be a practical and, compared to a traditionally made liquid-proof floor, an inexpensive solution. Floors in existing rooms, under roofs or as loading floors can be made impermeable by installing and connecting separate elements. By using special couplings, two or more floor elements guarantee a complete liquid-tight floor. The products shown can be used within the PGS 15 regulations.

- Zulassung: Übereinstimmungserklärung (ÜHP) gem. Bauregelliste A teil 1 Dibt, Berlin.
- Removable, high load-bearing galvanized grid floor.
- Draining trays, gratings and ramps made of galvanized steel (DIN 50976).
- Drip trays and coupling profiles made of 3 mm galvanized steel from steel S235JR.
- With the Cross Connector (optional), 4 drip trays can be fixed at the junction, easily with an Allen bolt.
- Tracks and corners made of anti-slip and galvanized bulb plate 5 mm S235JR.
- Skid plate
- Ramps and corners (optional) can be driven over with a forklift truck.
- The anchoring profiles supplied as standard allow the drip trays to be anchored securely to the ground.
- Simple placement/assembly and always expandable or adaptable.